

Lesson Activity Toolkit

PRESENTED BY:
Carrie Rathsack
Integration Specialist
Rossford Schools

<http://ed-tech-integration.pbworks.com/SMART-LAT>



MUST INVEST...



TO GET...



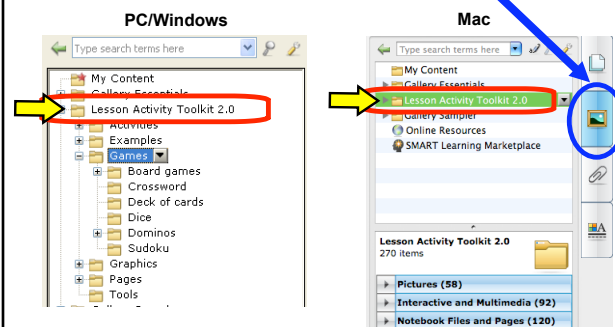
What is the LAT
(Lesson Activity Toolkit?)

Interactive!
Auto-correct!
Templates!

Plus...
NEW WAYS
TO USE
NOTEBOOK
(LAYERS,
HIDDEN TEXT,
AND MORE!)

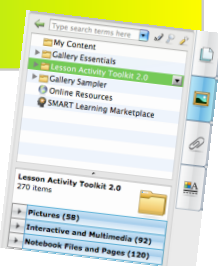
Where is the LAT?

*It's in the Gallery, just click on
the Gallery tab...*

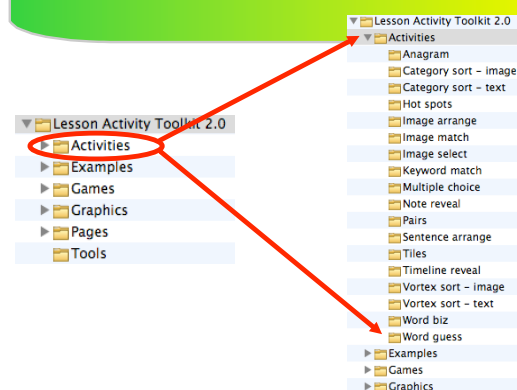


**Why should you use
the LAT?**

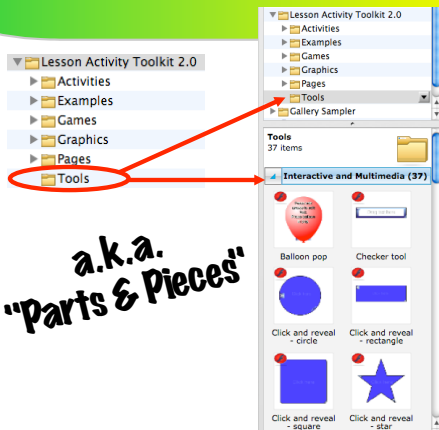
- For interactive lessons, activities, or games
- For discussion starters
- For concept reinforcement
- For self-checking assessments
- For... so much more!



What's inside the LAT?



What's inside the LAT?



Samples from LAT 2.0...

STRATEGIES

Random word chooser (or student or number chooser!)

Tiles (matching or picture reveal)

Color Reveal (block)

Click to reveal

Color Reveal (magnify glass)

Layer reveal (pull)

Timeline Reveal (events, sequencing)

Erase to reveal

Balloon Pop (reveal answers correct, not)

Drag to Target

Fill in the Blank (ADD)

Pull tabs (to reveal)

Venn Diagram (2 circles)

Target (darts)

Ranking (ramp)

Dice (Images)

Dice (Keyword)

Title Page (lesson plan, objectives, notes)

TIMED/GAMES

Firecracker (timer)

Word Guess (soccer, tomato sploit, basketball)

Word Biz (spelling or math; timed game)

Crossword puzzle

Sudoku

Checkers or Chess board

SELF-CHECKING (w/ answer key)

Pairs (for matching)

Sentence Arrange (sequencing)

Hot Spots (map, number grid, body, or custom-your image!)

Vortex (image, text, or number sort - 2 categories)

Answer checker (for diagrams)

Category Sort - image or text (2 or 3 columns)

Image arrange (sequencing)

Image Match (2-5 words and pictures)

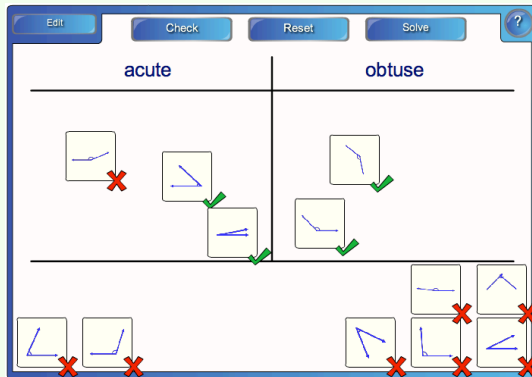
Image select (pictures and 3 answer choices)

Keyword match (self-checking)

Multiple Choice

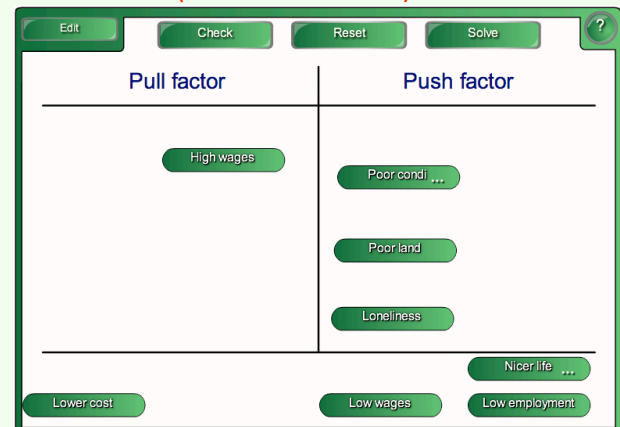
Category Sort - image

(Found in Activities)



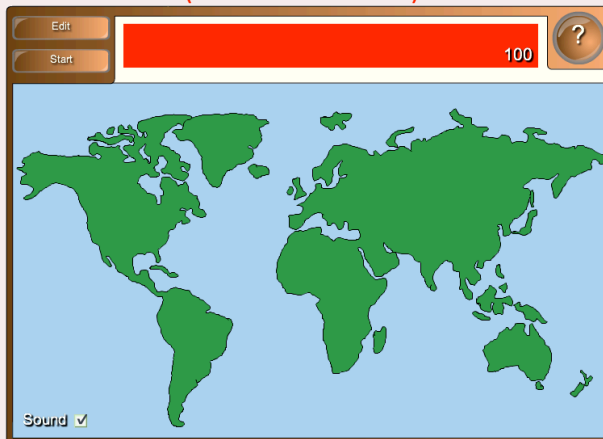
Category Sort - text

(Found in Activities)



Hot Spots (Ex.#1- world map)

(Found in Activities)



Keyword Match

(Found in Activities)

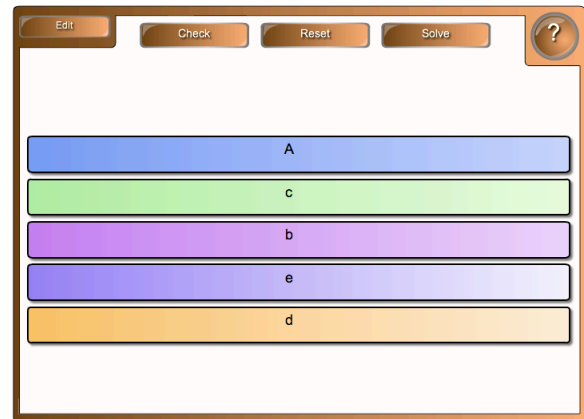


Pairs (aka- Memory game)

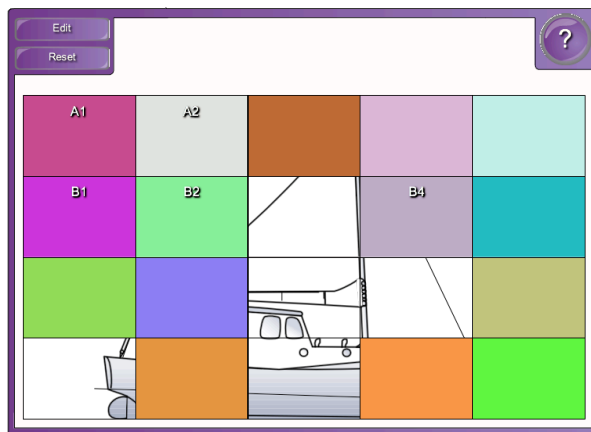
(Found in Activities)

**Sentence Arrange - sequencing**

(Found in Activities)

**Tiles (Ex.#1- picture reveal)**

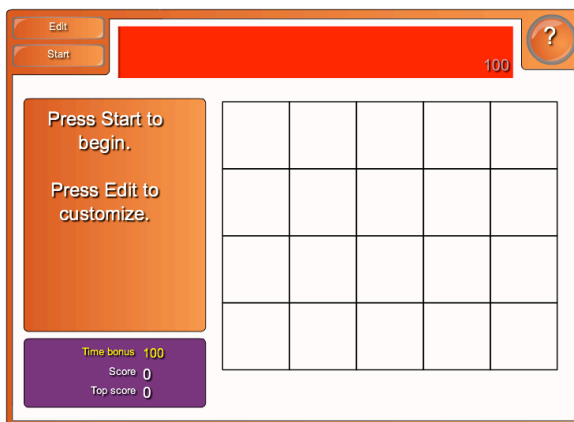
(Found in Activities)

**Vortex Sort - image**

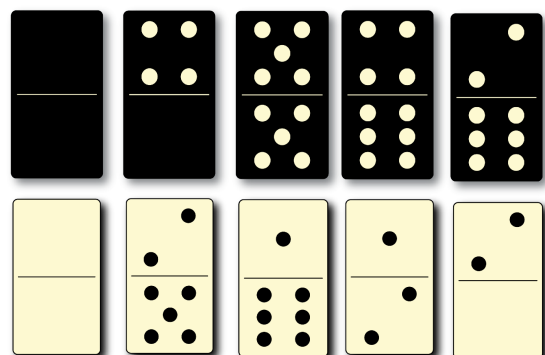
(Found in Activities)

**Word Biz (Ex. - math problems)**

(Found in Activities)

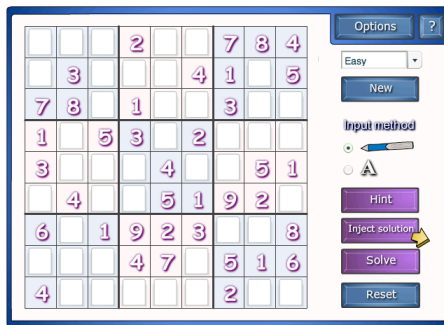
**Dominos**

(Found in Games)



Sudoku

(Found in Games)



Sort the adverbs into categories.

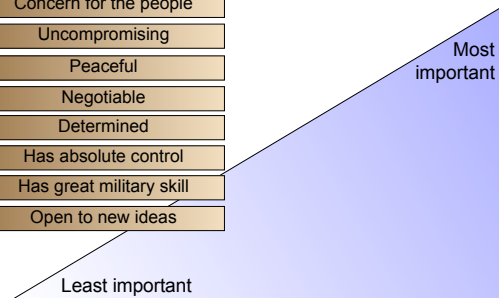
how?	when?	where?	how much?
happily	out	inside	often
very	not	carefully	quietly
loudly	softly	early	here
			later

Category Sort

(Found in Examples-Pages)

Which qualities would be essential to a leader who desired to unify the country?

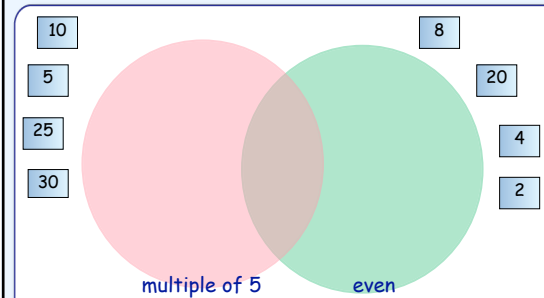
- Concern for the people
- Uncompromising
- Peaceful
- Negotiable
- Determined
- Has absolute control
- Has great military skill
- Open to new ideas



Ranking

(Found in Examples-Pages)

Complete the venn diagram.



Venn Diagram

(Found in Examples-Pages)

Lesson Activity Toolkit 2.0

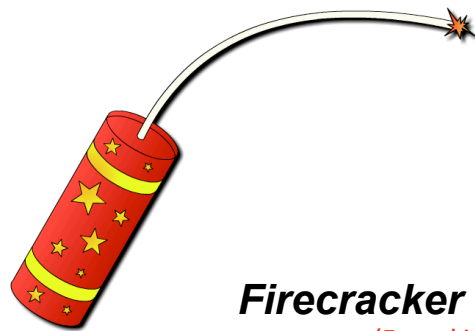
(This template is found in Pages -> Title Page)

- 1) Lesson objective 1
- 2) Lesson objective 2

Lesson objectives

Teachers' notes

Count down!



Firecracker Timer

(Found in Tools)

(Balloon Pop - found in Tools)

Which of these words are verbs?

Press the balloons to pop them.

The interface shows eight balloons arranged in two rows. The top row contains balloons with the words 'Jump', 'Apple', 'Car', and 'Run'. The bottom row contains balloons with 'Juggle', 'Color', 'Meal', and 'Spin'. The 'Jump' balloon has a checkmark, and the 'Color' balloon has an 'X'.

Label the diagram of the ear.

The diagram shows a cross-section of the human ear. Labels point to the 'ear drum', 'cochlea', and 'ear canal'. There are three 'Drag text here' boxes for labeling. Below the diagram, it says '(Checker Tool - found in Tools)'.

Color reveal - method 1

What are the names of the following animals?

The interface shows four animals: a green frog, a brown bison, a tan camel, and a brown bear. The word 'Camel' is written below the camel. A green bar is at the bottom.

Color reveal - method 2

Use the magnifying glass to reveal the five most populated cities in the world.

The interface shows a world map. A magnifying glass is positioned over Mexico City, which is labeled. The map is light blue with white outlines of continents.

Drag to target

Charging by _____ occurs when two substances are rubbed together. These two substances are initially _____. However, after being rubbed, one object becomes _____ while the other becomes _____. Charging by friction occurs because _____ are free to move from one substance to another. The _____ determines which substance will _____ electrons and which substance will _____ electrons.

Drag this to the target to reveal the answers:

neutral electrons negative gain friction electrostatic series lose positive

The interface shows a text box with a fill-in-the-blanks question about charging by friction. Below the text box is a list of words to be dragged into the blanks: neutral, electrons, negative, gain, friction, electrostatic, series, lose, positive. A target icon is on the right.

Pull tab

The interface shows a house with six numbered pull tabs (1-6) around it. The house has a chimney, windows, and a garage. A target icon is on the right.



***My Technology Integration Professional Development Oath
(My TIPDO)***

I solemnly swear (but not out loud) to uphold my end of the "PD Partnership" -- I will dedicate **at least 15 minutes every week** to investigate one of these possible tools or teaching strategies (or others) in order to constantly seek out the best means for my students to learn. Moreover, when I return home or back to school, I will immediately (upon remembering this oath) schedule these weekly sessions, intending to follow through with my word, with my integrity and my pride on the line, so that I can best serve my students' needs in preparing them for their future.

Lesson Activity Toolkit

PRESENTED BY:
Carrie Rathsack

Integration Specialist
Rossford Schools

<http://ed-tech-integration.pbworks.com/SMART-LAT>

